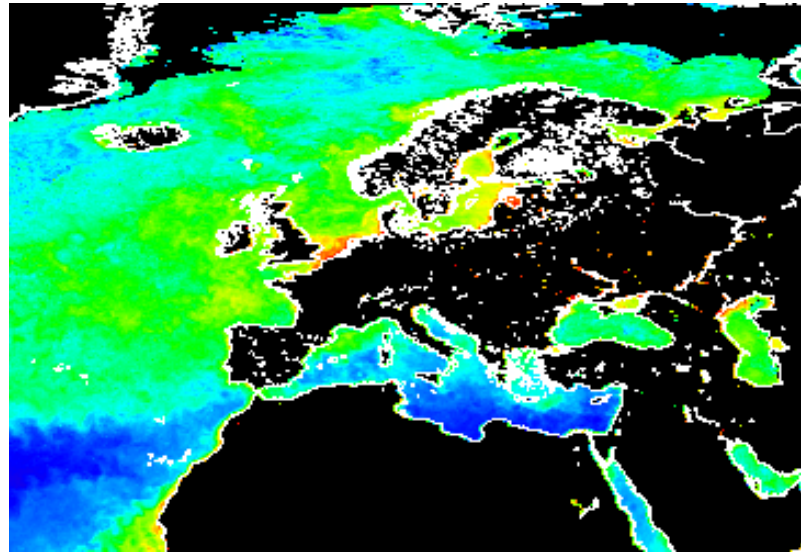


# GlobColour Users Overview and Illustrations

**Samantha Lavender  
and the GlobColour Team**



<http://www.globcolour.info/>

## GlobColour: Feedback from users (ESA News, 05 May 08)

- "We need to sustain an international effort to make sure we can link one satellite dataset to another to build the long-time series that we need to distinguish change from cycles, and GlobColour is definitely a significant step in that perspective," said Dr James Yoder, Chair of the International Ocean-Colour Coordinating Group (IOCCG).
- "I am quite impressed by the work ESA has done so far within GlobColour," said Dr Cyril Moulin of the International Ocean Carbon Coordination Project (IOCCP). "This 10-year dataset is going to be very useful for carbon studies and global modelling".

## GlobColour: In the Press

- “ACRI-ST shines with GlobCOLOUR project at Oceanology 2008”. French Technology Press Bureau, 11 Mar 08
- “GMES Marine Service to ensure the continuation of GlobColour”. EARSC Executive Secretary, 06 May 08
- “Ocean colouring data sheds lights on carbon cycle”. CORDIS News, 06 May 08
- “Projecto GlobColour da ESA melhora conhecimento dos Oceanos”. Meteorologia em português, 07 May 08
- “News on GlobColour”, EGU Newsletter, 24 Jul 08



**ARGANS**

**3<sup>rd</sup> GlobColour Users Workshop**



# GlobColour: 2008 Publications

- Darbra *et al.* (In Press) Survey on environmental monitoring requirements of European ports, Journal of Environmental Management. [Medspiration also mentioned]
- Hoepffner, Wilson and Lavender (2008) Ocean Colour and Climate Change, IOCCG Report 7, Chapter 10.
- Maritorena *et al.* (Under Prep) Ocean Color merged data sets: benefits and challenges.
- Merchant, Filipiak, Le Borgne, Roquet, Autret, Piollé and Lavender (2008) Diurnal warm-layer events in the western Mediterranean and European shelf seas, Geophysical Research Letter, Vol. 35, doi:10.1029/2007GL033071.
- Siegel *et al.* (Under Prep) Challenges Facing the Creation of Satellite Ocean Color Climate Data Records.
- Siegel, Yoder and McClain (2008) Thoughts About the Future of Satellite Ocean Color Observations, Ocean Carbon & Biogeochemistry News, Vol. 1, No. 2.



**ARGANS**

**3<sup>rd</sup> GlobColour Users Workshop**



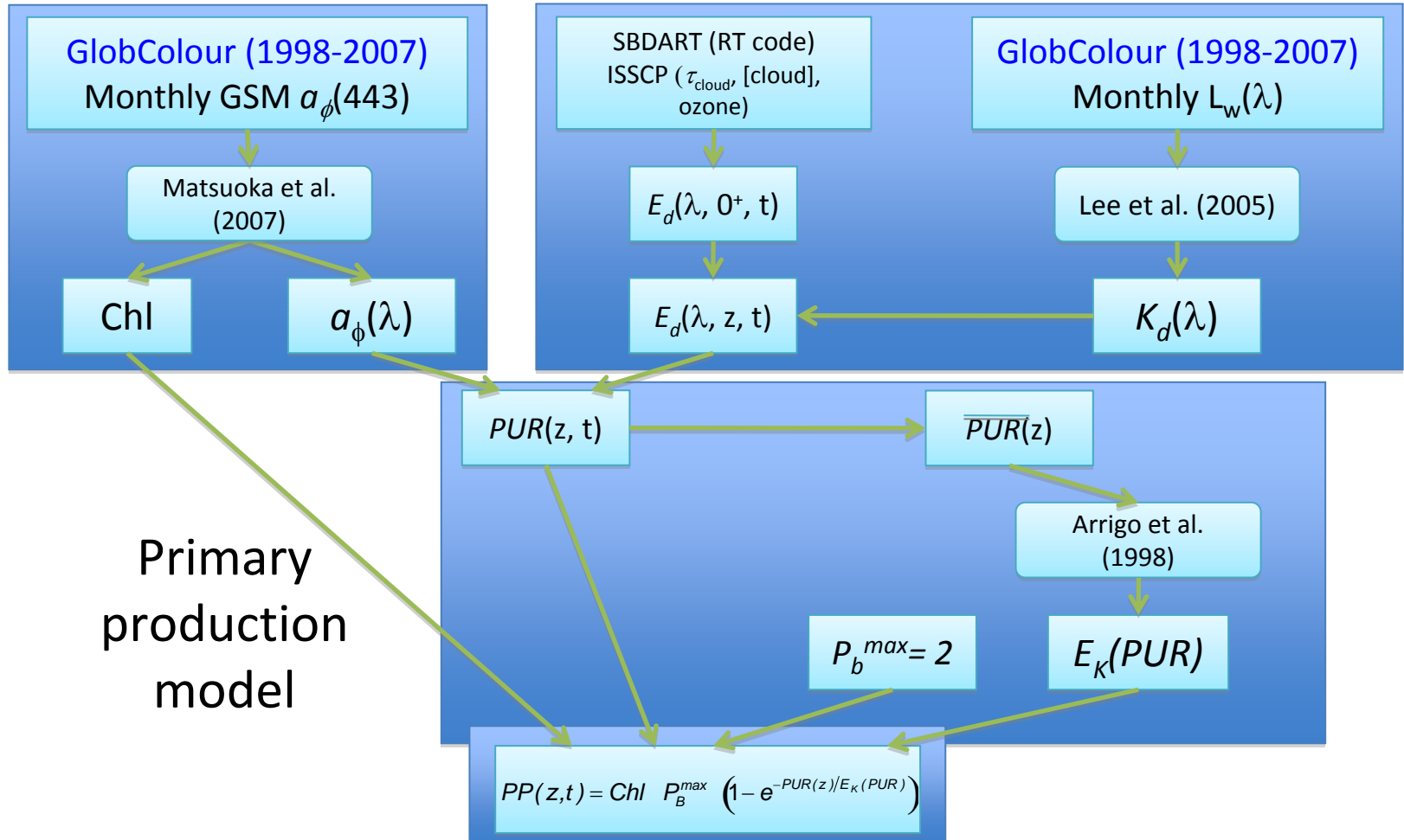
## Phase 2 Summary

- Products can be split into two categories:
  - Require processing from Level-1/Level-2 or a combination of sources e.g. PAR and primary production (SST and ocean colour)
  - Can be easily calculated from existing GlobColour products by applying algorithms/models to existing products
- The users could calculate the 2nd set on their own, but is that the best way? Yes, for those able to cope with downloading and processing. An alternative is to develop a GRID approach so that the users do the processing, but using remote resources and a user friendly front end.
- What do users want? A coastal version of GlobColour? More difficult, but shouldn't be avoided because the availability of products drives development/usage and hence further research.

# New products, including those processed from Level1

The screenshot displays the GlobColour website interface. At the top, there are logos for 'esa', 'GLOBCOLOUR', 'Hermes', 'Product User Guide', and 'ACRI'. Below these are navigation links: 'Home page', 'Archive', 'Near Real Time', 'Demonstration products', 'Subscriptions', and 'Rolling archive'. The main content area is titled 'Demonstration products' and features a world map. To the left of the map, there are input fields for 'North' (90°N) and 'South' (90°S), and 'West' (180°W) and 'East' (180°E) coordinates, along with a 'Reset' button. Below this is a 'Resolution' section with radio buttons for 4 km, 9 km, 25 km, and 100 km. To the right of the map, there is a 'Select product parameters' section with checkboxes for PAR (checked), ZHL, ZSD, and Primary productivity (soon available). Below that is a 'Select a date or period' section with 'From' (01/01/2003) and 'to' (31/12/2003) fields, and a note '( Use date format: dd/mm/yyyy )'. At the bottom right is a 'Binning period' section with radio buttons for daily, 8-days, and monthly (checked). At the bottom of the main area are 'Search' and 'Upload a list' buttons. The footer contains 'Interface User Manual', 'Contact: [service@globcolour.info](mailto:service@globcolour.info)', and a disclaimer: 'All images and data available on this GlobColour site are for research and educational use only.' The browser status bar at the bottom shows 'Done', 'Internet | Protected Mode: On', and '100%' zoom.

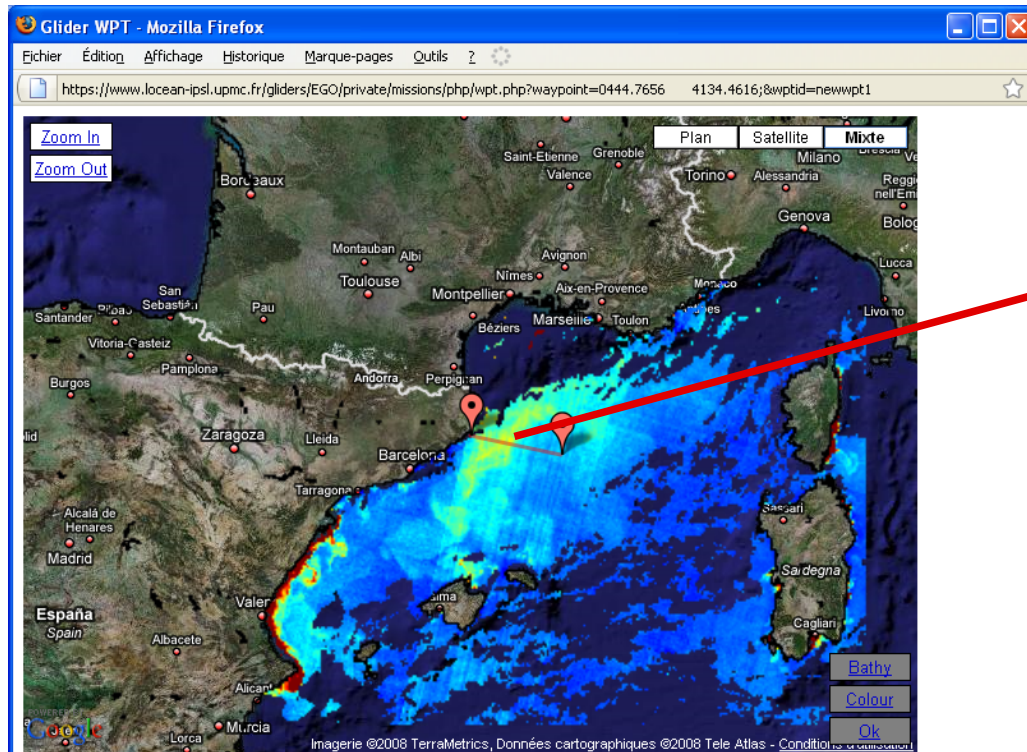
# Pan-Arctic Primary Production and CDOM Photooxidation (Babin and Bélanger)



Primary  
production  
model



# European Gliding Observatories (EGO) initiative



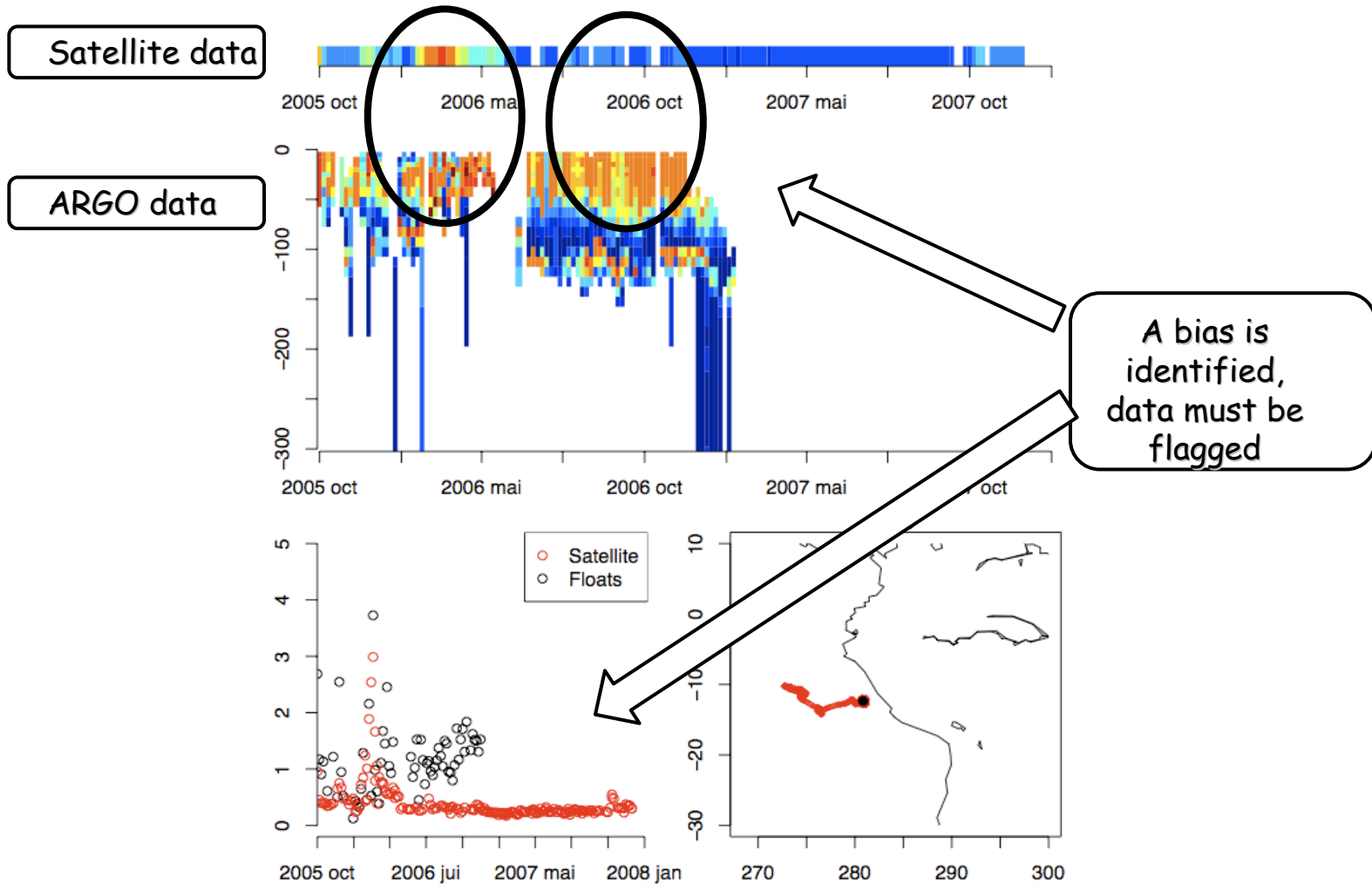
glider trajectory  
and waypoints

CHL1 (27 Oct 08) in real-time on Google Map  
in the Glider Fleet Control Panel.

<http://www.locean-ipsl.upmc.fr/gliders/EGO/index.php>



# QC on biogeochemical profiling floats (Fabrizio)



# 1km data available via the Subscription Service

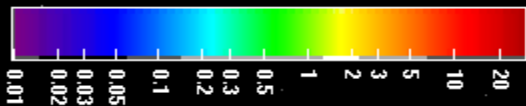
The screenshot displays the GlobColour website interface for the subscription service. At the top, there are logos for ESA, GlobColour, Hermes, and ACRI. A navigation bar includes links for Home page, Archive, Near Real Time, Demonstration products, Subscriptions, and Rolling archive. The main content area is titled "MERIS - MODIS" and features a world map for selecting an area. Below the map are input fields for North (90°N), West (180°W), East (180°E), and South (90°S), along with a "Reset" button. The "Resolution (max. size area)" section offers two options: 1 km (~10x10 deg) and 4 km (~40x40 deg). The "Sensor" section has radio buttons for MERIS, MODIS, and MERIS+MODIS. The "Format" section has radio buttons for netCDF-map and netCDF-sin. The "Frequency" section has checkboxes for daily composite 4days (checked), monthly, 8days, daily, and custom. The "Weighted averaging method" section has checkboxes for CHL1 (checked), L412, L443, L490, L555, L670, KD490, EL555, T865, and CF. The "GSM method" section has checkboxes for CHL1-GSM, CDM-GSM, and BBP-GSM. At the bottom, there is a date field for "End of delivery" set to 29/11/2008, with a note "period max: 55 days" and "format: dd/mm/yyyy". Two buttons, "Submit query" and "Consult query", are located at the bottom center. A footer contains a globe icon, contact information, and a disclaimer: "All images and data available on this GlobColour site are for research and educational use only." The browser status bar at the bottom shows "Done", "Internet | Protected Mode: On", and "100%".

# Summary

- Products can be split into two categories:
  - Require processing from Level-1/Level-2 or a combination of sources e.g. PAR and primary production (SST and ocean colour) **Demonstration products available and users creating products(e.g. primary production) themselves**
  - Can be easily calculated from existing GlobColour products by applying algorithms/models to existing products **Demonstration products available and users creating products themselves**
- What do users want? A coastal version of GlobColour? More difficult, but shouldn't be avoided because the availability of products drives development/usage and hence further research. **1km data available via the Subscription Service, but not specialist coastal processing. At 2008 MERIS/AATSR workshop there was also a request for a service dedicated to inland waters**

# GlobColour - CHL1 - Merged monthly product (GSM)

Chlorophyll a concentration (mg/m<sup>3</sup>)



[www.globcolour.info](http://www.globcolour.info)

